

# NOVEMBER 2010

## Your Guide to Events in



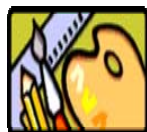
# The pennington T O W N S H I P

Littleborough, Smithy Bridge, Wardle, Milnrow, Newhey, Smallbridge, Firgrove

If your group has an event to include in future calendars,  
please contact Helena Kelly by **2.30pm** on the **10th of the previous month**.  
Tel: (01706) 757600 or you can email Helena at  
[helena.kelly@rochdale.gov.uk](mailto:helena.kelly@rochdale.gov.uk)

# Weekly/Fortnightly/Monthly

<b>WARDLE ART GROUP</b>	<b>Mondays – 2.00pm–4.00pm</b> at Wardle Library. <b>Tuesdays – 7.30pm–9.30pm</b> at Wardle Conservative Club (upstairs). Come along, everyone welcome. <b>Contact: Rose 736572/712855</b>
<b>UNITED CO-OP MILNROW BAND</b>	<b>Mondays &amp; Thursdays – 8.00pm–10.00pm</b> – Rehearsal Nights. Interested parties welcome. <b>Contact: Mrs V Fitton 848349</b>
<b>MEADOWFIELDS COMMUNITY CENTRE</b> Tel 648005	<b>Luncheon Club, Tuesdays from 11.00am</b> for aged 50+. All Welcome. <b>Contact: Angie</b> <b>Precious Moments, Tuesday, 1.15pm–2.45pm</b> , Parents/Carers & Children 0–4 years old. <b>Contact: Becky</b> <b>Luncheon club/activities Friday 11.00am–2.00pm</b> all welcome. <b>Contact: Angie</b> <b>Pre-school 9.00am–12.00pm Monday to Friday age 2-4 years, term time.</b> <b>Contact: Becky</b>
<b>LITTLEBOROUGH LACE GROUP</b>	Meet weekly at <b>Littleborough Community School</b> every Wednesday at 7.00–9.00pm <b>TERM TIME ONLY</b> . <b>Contact: Jean 644103</b> <b>NEW MEMBERS WELCOME</b>
<b>LITTLEBOROUGH TOWNSWOMEN'S GUILD</b>	Meet weekly at the <b>Coach House</b> - Wednesday at 7.30pm. New members very welcome! <b>Contact: Pam 378960</b>
<b>SMITHY BRIDGE LIBRARY</b>	<b>Term Time Only - UNDER 5's STORY TIME 2.30–3.15pm - Monday</b> <b>'Silver Surfers' session every Tuesday 10.00am–12.00noon</b> <b>Contact: Elaine/Jennifer 378281</b>
<b>ADULT TAI CHI CLASSES</b>	<b>Each Wednesday at 1.00–2.00pm</b> at United Reform Church, Victoria Street, Littleborough - £3.00 <b>Contact: Mary 379535</b>
<b>LITTLEBOROUGH LIBRARY</b>	<b>SILVER SURFERS</b> every Monday 10.30–11.30am <b>Poetry Group</b> 2nd Monday in the month at 2–3.30pm <b>Reading Group</b> 4th Saturday 10.30am for approx. 1 hour. <b>Story Time</b> Friday 2.30pm and <b>Rhythm &amp; Rhyme</b> Tuesday 2.30pm - 3.15pm both <b>TERM TIME ONLY</b> . <b>Creative Writing</b> 3rd Monday 2.00–3.30pm <b>Coffee Morning</b> each Tuesday from 10.30am. <b>Contact: Shabana 378219</b>
<b>SMITHY BRIDGE LADIES CLUB</b>	<b>3rd Thursday in the Month</b> - at Hollingworth Lake Rowing Club at 8.00pm. <b>Contact: Dilys 377685</b>
<b>MILNROW LIBRARY</b>	<b>SILVER SURFERS</b> every Tuesday 10am–12.00noon, <b>Reading Group</b> monthly on a Tuesday 10–11.00am, <b>Poetry Group</b> fortnightly on a Thursday 11am–12.00noon, <b>Under 5's story time TERM TIME ONLY</b> Friday 10–10.30am. <b>Contact: Jean 641563</b>
<b>SMITHY BRIDGE PRIMARY SCHOOL</b>	<b>Friday Youth Club - TERM TIME ONLY</b> at 6.15pm - 7.30pm for ages 7–8years and 7.45pm - 9.15pm for ages 9–10 years old. <b>Contact: Trevor/Jane 378083</b>
<b>ST MARY'S FUND RAISING GROUP</b>	<b>Tuesday weekly - BINGO</b> at 7.30–9.00pm at St Mary's Parish Centre, Featherstall Road, Littleborough. Annual membership fee - 50p. <b>Contact: Joyce 378978</b>



## EXHIBITIONS AT LITTLEBOROUGH COACH HOUSE

*Until 27th November - The Attic Artists Paintings - mixed media*  
*For contact details ring 01706 378481*



**Annual General Meeting**  
**Monday 29th at 7.00pm**  
at Butterworth Hall, Milnrow  
Join us for wine & cheese at 6.30

## FRIENDS OF HARE HILL PARK



Meet Tuesday 16th November  
at Littleborough Cricket Club  
At 7.30pm - All welcome!  
Contact Malcolm Tel: 376765



## Lancashire Night

**Saturday 27th November**

5.00pm start with Rochdale Morris, Proclamation and lights switch-on at 6.30pm in Littleborough Square

## Farmers Market

## Sunday 28th November



10am - 4.00pm at Peel St, Littleborough with **Art Fair** from 12pm at the Conservative Club.



## Sunday 14th Remembrance Day



**Littleborough 10.50am**  
**Milnrow 10.50pm**  
**Wardle 3.00pm**  
at the Cenotaph



## PENNINES TOWNSHIP MEETING

**Tuesday 9th November at 6.15pm at Newhey C.P. School, Newhey**

# Monthly Events

<b>Councillors' Surgery</b>	<b>MONDAY 1st</b>	<b>WARDLE &amp; WEST LITTLEBOROUGH COUNCILLORS' SURGERY</b> 6.00pm-7.00pm at Littleborough Coach House 7.00pm-8.00pm at Smallbridge & Wardle Community Centre, Wardle	<b>Cllr. Dearnley</b> <b>Cllr. Clegg</b> <b>Cllr. Darnbrough</b>
	<b>SATURDAY 6th</b>	<b>LITTLEBOROUGH LAKESIDE COUNCILLORS' SURGERY</b> 10.00am-10.45am - Smithy Bridge Library, Smithy Bridge Road 11.00am-12.00 noon - Hare Hill House, Littleborough	<b>Cllr. Evans</b> <b>Cllr. Jones</b>
	<b>MONDAY 1st</b>	6.00pm-7.00pm - Littleborough Coach House	<b>Cllr Mills</b>
		<b>MILNROW &amp; NEWHEY COUNCILLORS</b> Keith Swift Tel: 0781 6814102 Irene Davidson Tel: 650311 Andy Kelly Tel: 342821	
		<b>SMALLBRIDGE &amp; FIRGROVE COUNCILLORS</b> Jean Ashworth Tel: 653787 Brenda Kerslake Tel: 639551 Martin Burke Tel: 0777 4936840	
	<b>SATURDAY 6th</b> <b>SATURDAY 13th</b>	11.00-12.00noon - St Ann's Church, Milnrow Road 11.00-12.00noon - Smallbridge T & R Community Base, Stevenson Square	<b>Cllr. Burke</b> “
<b>TUESDAY 2nd</b>	<b>Lancashire Wildlife Trust - 'The Marvels of Moths'</b> an illustrated talk by Steve Palmer (Lancashire Moth Group). <b>Contact Graham Tel: 376999</b>		
<b>THURSDAY 4th</b>	<b>Wardle Society</b> meets first Thursday of each month at <b>The Globe Inn, Wardle at 7.00pm</b> . All welcome, if you want to be involved in local issues in the Wardle area. <b>Contact: Sylvia 379542</b>		
<b>TUESDAY 9th</b>	<b>LITTLEBOROUGH CIVIC TRUST - 7.30pm</b> - Monthly meeting at the Littleborough Coach House. Anyone and everyone welcome. <b>Contact: Iain 377829</b>		
<b>TUESDAY 9th &amp; 23rd</b>	<b>Littleborough &amp; District Lions Club - 7.45pm</b> . Help us to raise funds for local charities/organisations and enjoy doing it. New members welcome. <b>Littleborough Conservative Club Contact: Susan 377697</b>		
<b>WEDNESDAY 10th</b>	<b>Rochdale &amp; Littleborough Peace Group</b> - Meetings on the second Wednesday of each month. For further details and venues contact: <b>Rae Street on 378043</b> or <b>Philip Gilligan 370712</b>		
<b>WEDNESDAY 10th</b>	<b>Littleborough Area Pensioners' Association</b> - Meeting at the Littleborough Coach House at 1.00-3.45pm. <b>Contact: Anneliese 379762</b>		
<b>THURSDAY 11th</b>	<b>Littleborough Historical &amp; Archaeological Society</b> at 8.00pm Harvey Room, Littleborough Coach House <b>£2/£2.50</b> inc refreshments. <b>Contact: Judith Pauls 650636 Dilys Pearson 377685</b>		
<b>TUESDAY 23rd</b>	<b>Pennines Winemaking Guild</b> - Join us for a pleasant evening every 4th Tuesday in the month - <b>7.45pm at the Littleborough Coach House. Contact: Len 377781</b>		
<b>MONDAY 8th</b>	<b>Wardle &amp; Smallbridge History Group</b> - meet at 7.30pm at Community Centre, Wardle. Speakers, local history projects, exhibitions - everyone welcome. <b>Contact: Bernice 371127</b>		
<b>TUESDAY 2nd</b> <b>TUESDAY 16th</b>	<b>Milnrow Literary &amp; Scientific Society</b> meet at 8.00pm at Butterworth Hall, Milnrow. Members £8/annum or £1 per visit. <b>Contact: Bryan 630755</b>		

**LITTLEBOROUGH COACH HOUSE**  
**Lunchtime Concerts**  
 30th November at 1.00pm  
 Trinity Singers  
 Admission £2



 **Littleborough Events and Associations Forum**  
 Meet Wed 3rd at Littleborough Con. Club at 7.30pm

 **The Mad Theatre Company**  
 Present  
 'A Christmas Carol' - Abridged Version  
 also a Potted Panto - **CINDERALFRED**  
 Thurs 25th - Sat 27th @ 7.30pm  
 at **Milnrow Parish School Hall, St James Street**  
**Contact: Margaret (01706) 641228**

**ELLENROAD ENGINE HOUSE**  
 Sunday 7th November in **STEAM 12.00- 4.00pm**  
 plus demonstration & sales  
 by **West Pennines Woodturners**  
 Tel 07855 331074 - by **J21 M62 Milnrow**

# ACTIVITIES & SPORT

## LITTLEBOROUGH RUGBY LEAGUE CLUB

Free Training Saturday Mornings 10.00-11.15am  
 Tuesday/Thursday 7.00-8.00pm  
 Littleborough Community Campus, Calderbrook Road  
 Contact Janine Tel: 07894791033/370974



## WANTED

### BADMINTON PLAYERS

Every Wednesday 7.00pm-9.00pm  
 at Littleborough Community Campus  
 Contact: Jim 376015

## BACK DOOR MUSIC PROJECT

Mosh Pits: Rock, Punk, Heavy Metal  
 DJ Nights by young people for young people  
 13-18 year olds

Regular weekly music workshop – various venues  
[www.backdoormusicproject.co.uk](http://www.backdoormusicproject.co.uk)  
 Contact: Dave 07930362399

Coach House Kickers - Line Dancing  
 Every Friday 7.30 - 10.00pm  
 At Littleborough Coach House

## MODERN SEQUENCE DANCING

Fridays 7.30pm-10.00pm St. Mary's Parish Centre  
 Littleborough  
 Bar, refreshments, everyone welcome, friendly atmosphere.  
 Contact: Margaret Tel 01706 379716

## ROCHDALE MORRIS

Every Wednesday  
 8.30-10.00pm  
 Littleborough Sports Club  
 Rakewood  
 Contact: Dorothy 662978/642954  
 \*\*\*\*\*

## ST ANN'S MORRIS TROUPE

Every Tuesday, Term time.  
 6.00-8.00pm  
 Moorhouse Primary School  
 Milnrow  
 Girls aged 5 yrs upwards  
 Contact: Deborah 01706 527467  
 \*\*\*\*\*

## MILNROW MORRIS TROUPE

Every Thursday  
 at 6.30pm-8.30pm  
 Milnrow Working Men's Club  
 All girls aged 5 years upwards  
 Contact: Val 650233  
 Joan 657002

## FOOTSTEPS DANCE ACADEMY

LINE DANCING at Littleborough Cricket Club, every  
 Monday 7.00pm-10.00pm  
 For details contact Jean on (01706) 644298



## Boro-Cheer - The Club for Cheerleading!

Come and learn Dance, Gymnastics, Stunts and Cheers  
 all taught by I.C.T. Qualified Coach  
 Contact Tracey Ray Tel 0778 719 8392



## STREETDANCE & MUSICAL THEATRE Classes

for children 4-15 years old every Wednesday at  
 The Beach Pub, Hollingworth Lake, various times  
 For info' Contact: Tracey Ray 07787198392



## SPIRAL DANCE

Open community dance for over 50's at Littleborough Coach House - COST £2  
 Mondays 11.00am - 12noon. Gentle dance activity in a range of dance styles. Contact Margaret on Tel: 644433

Youth Clubs

Thursdays Smithy Bridge Methodist Church 7.30-9.00pm age 12-18 years Contact Glen: 378050  
 Wednesdays 6.00-8.30pm ages 13-19 years Littleborough Community Campus,  
 Littleborough UN Group Mondays 6.00-8.30pm Contact Steve: 756600



Milnrow Youth Club, Cornfield Street, 13-19 years Tuesday/Thursday 5.30-9.00pm Contact Karen: 756600

Youth Clubs